

HORNBEAM

(Plot 4) 5 bedroom house

Park Wood | Stanley Road | Stourbridge | DY8 2DL

PARK WOOD



Computer generated image only. Details may vary.

Executive 5 bedroom home with large integrated double garage



Generous master bedroom suite



Spacious kitchen / dining area with home hub area



En suite bathroom to bedrooms 1 & 2



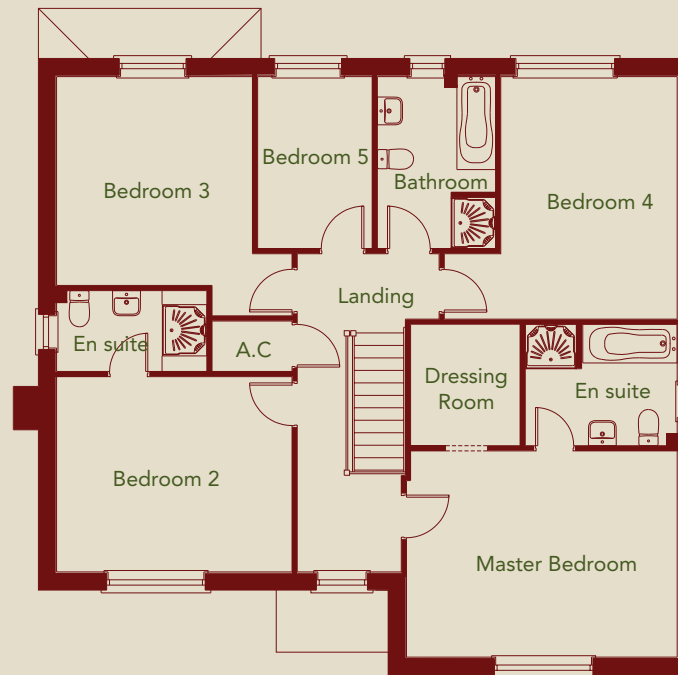
Separate utility area

HORNBEAM

(Plot 4) 5 bedroom house



Site plan not to scale



GROUND FLOOR

| | | |
|----------------|------------------|-----------------|
| Kitchen/Dining | 11116mm x 4438mm | (36'6" x 14'7") |
| Living Room | 5208mm x 3750mm | (17'1" x 12'4") |
| Home Hub | 1857mm x 1636mm | (6'1" x 5'4") |
| Utility | 2746mm x 1579mm | (9'0" x 5'2") |

FIRST FLOOR

| | | |
|----------------|-----------------|------------------|
| Master Bedroom | 4796mm x 3704mm | (15'9" x 12'2") |
| En suite 1 | 2728mm x 2181mm | (8'11" x 7'2") |
| Dressing Room | 2181mm x 1967mm | (7'2" x 6'5") |
| Bedroom 2 | 4229mm x 3508mm | (13'11" x 11'6") |
| En suite 2 | 2700mm x 1451mm | (8'10" x 4'9") |
| Bedroom 3 | 4229mm x 4296mm | (13'11" x 14'1") |
| Bedroom 4 | 4355mm x 4183mm | (14'3" x 13'9") |
| Bedroom 5 | 3088mm x 2059mm | (10'2" x 6'9") |

Floor plans not to scale. All dimensions are approximate maximum room sizes and should not be relied upon for flooring or furniture placement.

