

# DOUGLAS

(Plots 1, 2, & 7) 4 bedroom house

Park Wood | Stanley Road | Stourbridge | DY8 2DL

# PARK WOOD



Computer generated image only. Details may vary.

Attractive, 4 bedroom home with  
feature front door



Integral garage



4 double bedrooms



Spacious family / dining area



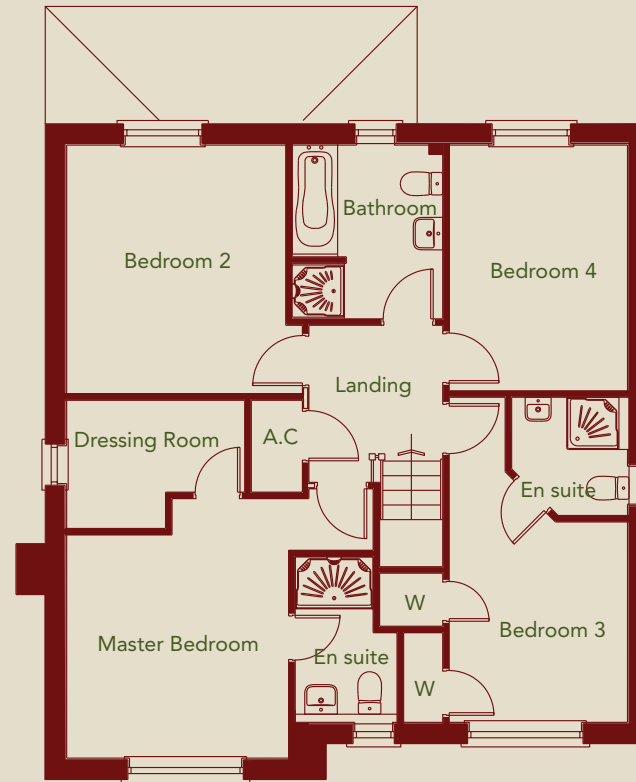
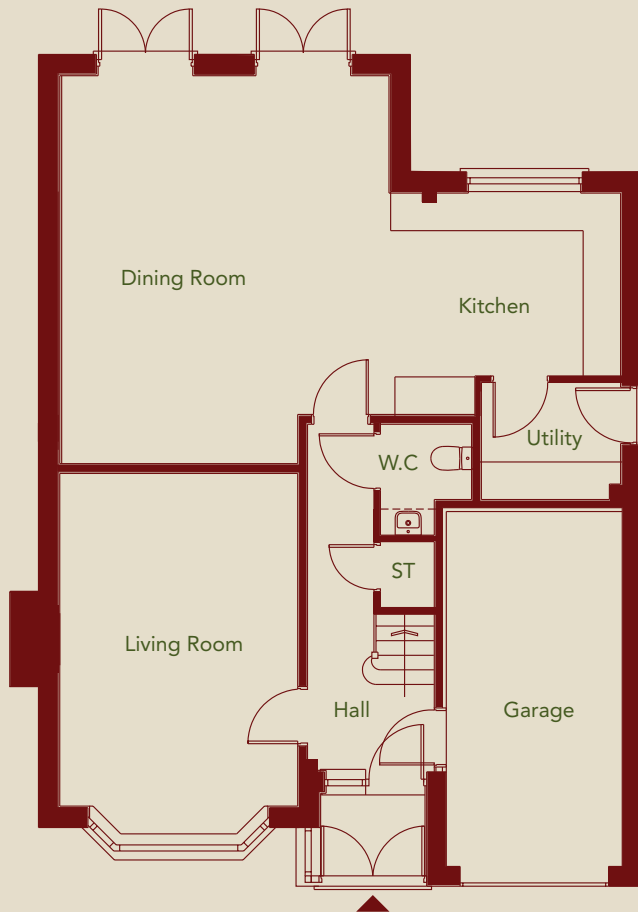
En suite bathroom to  
two bedrooms

# DOUGLAS

(Plots 1, 2, & 7) 4 bedroom house



Site plan not to scale



## GROUND FLOOR

Kitchen	3392mm x 3550mm	(11'2" x 11'8")
Dining Room	5946mm x 5016mm	(19'6" x 16'5")
Living Room	5100mm x 3645mm	(16'9" x 12'0")
Utility	1795mm x 2134mm	(5'11" x 7'0")

## FIRST FLOOR

Master Bedroom	3978mm x 4698mm	(13'1" x 15'5")
En Suite 1	1738mm x 1562mm	(5'8" x 5'1")
Dressing Room	2730mm x 1964mm	(8'11" x 6'5")
Bedroom 2	4982mm x 2731mm	(16'4" x 9'0")
En Suite 2	1811mm x 1775mm	(5'11" x 5'10")
Bedroom 3	3811mm x 3358mm	(12'6" x 11'0")
Bedroom 4	3764mm x 2731mm	(12'4" x 9'0")

Floor plans not to scale. All dimensions are approximate maximum room sizes and should not be relied upon for flooring or furniture placement.

