

# CEDAR

(Plot 6) 4 bedroom house

Park Wood | Stanley Road | Stourbridge | DY8 2DL

# PARK WOOD



Computer generated image only. Details may vary.

Striking architectural design



Open plan kitchen, breakfast and dining room



Home hub I.T centre



Separate utility room



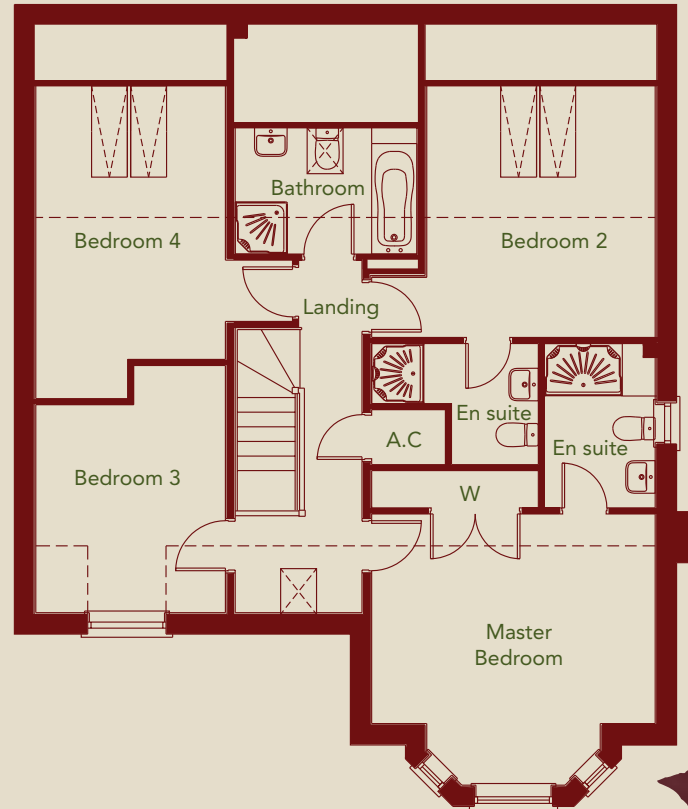
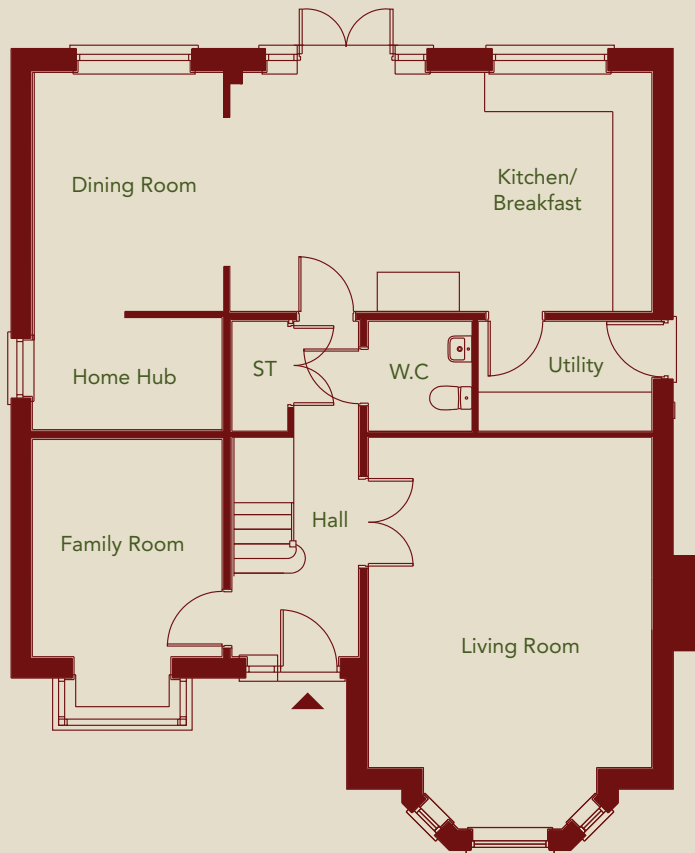
Generous rear garden

# CEDAR

(Plot 6) 4 bedroom house



Site plan not to scale



## GROUND FLOOR

Kitchen/Breakfast	6470mm x 3664mm	(21'3" x 12'0")
Dining Room	2903mm x 3664mm	(9'6" x 12'0")
Living Room	6006mm x 4346mm	(19'8" x 14'3")
Family Room	3683mm x 2098mm	(12'1" x 9'6")
Home Hub	2908mm x 1718mm	(9'6" x 5'8")
Utility	2633mm x 1686mm	(8'9" x 5'6")

## FIRST FLOOR

Master Bedroom	4158mm x 4346mm	(13'8" x 14'3")
En suite 1	1714mm x 1699mm	(5'7" x 5'7")
Bedroom 2	4346mm x 3858mm	(14'3" x 12'8")
En suite 2	1755mm x 1855mm	(5'9" x 6'1")
Bedroom 3	2908mm x 3189mm	(9'6" x 10'6")
Bedroom 4	3936mm x 4194mm	(12'11" x 13'9")

Floor plans not to scale. All dimensions are approximate maximum room sizes and should not be relied upon for flooring or furniture placement.