

# ROXBURY

(Plots 5, 8, 10, 11, 13, 33 & 34) 4 bedroom house

DUGDALE DRIVE | WARNDON | WORCESTER | SAT NAV WR4 0QR

ORCHARD



WALK



Computer generated image only, details will vary.

THESE BEAUTIFUL FOUR BEDROOM DETACHED HOMES PROVIDE PLENTY OF ROOM TO ENTERTAIN WITH SEPARATE LIVING ROOM, DINING ROOM AND STUDY.



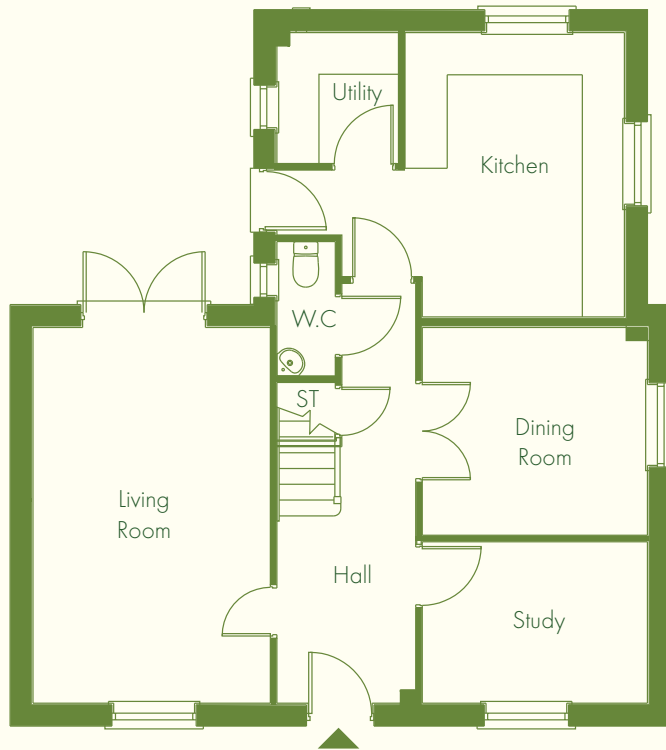
WORCESTERSHIRE COUNTRYSIDE

# ROXBURY

(Plots 5, 8, 10, 11, 13, 33 & 34) 4 bedroom house

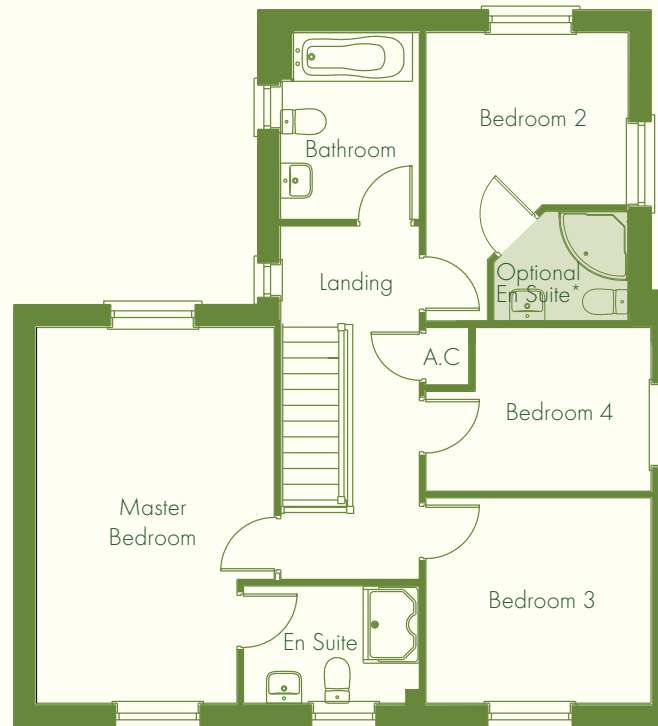


Site plan not to scale.



**GROUND FLOOR**

Kitchen	4950mm x 4050mm (16'3" x 13'3")
Dining Room	3207mm x 2958mm (10'6" x 9'8")
Living Room	3380mm x 5350mm (11'1" x 17'7")
Study	3207mm x 2299mm (10'6" x 7'7")
Utility	1732mm x 1864mm (5'8" x 6'1")



**FIRST FLOOR**

Master Bedroom	5350mm x 3383mm (17'7" x 11'1")
En Suite	2505mm x 1694mm (8'3" x 5'7")
Bedroom 2	4107mm x 2880mm (13'6" x 9'5")
Bedroom 2 Optional En Suite	1557mm x 1911mm (5'1" x 6'3")
Bedroom 3	3207mm x 2925mm (10'6" x 9'7")
Bedroom 4	3207mm x 2318mm (10'6" x 7'7")
Bathroom	1977mm x 2660mm (6'6" x 8'9")

Floor plans not to scale. All dimensions are approximate maximum room sizes and should not be relied upon for flooring or furniture placement. \*En Suite available as optional extra.

